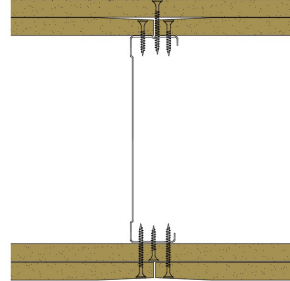


146-K-57 - SPEEDLINE System Data Sheet - Version V1 (24-10-23)

SPEEDLINE 146mm 'C' Stud Partition @600mm
Ctrs, with 2x Knauf 12.5mm Wallboard each side



System Performance Breakdown

Fire Resistance:

BS476 Part 22:1987:

Test Ref & Date or Applied Ref & Report:

Max Height:

Thickness:

Duty Grade: BS 5234: Part 2:1992:

Sound Insulation:

60/60 Minutes (Integrity/Insulation).

BRE 208596 - BRE Report P102396-1011B

Refer to Speedline Specification Clause

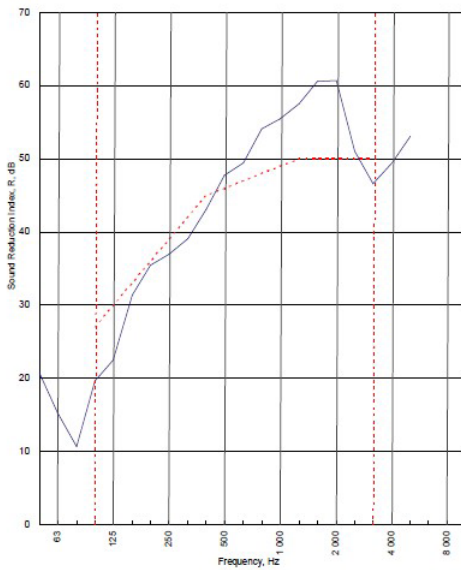
198 mm. (At Base Track, Excluding Finishes)

Severe - Annexes A-F

46 R_w dB, Date Tested or Assessed Against - 70-K-57

Test Code:
H17517AA
Test Date:
08/08/2011

| Freq. Hz | R dB |
|----------|------|
| 50 | 20.8 |
| 63 | 15.3 |
| 80 | 10.7 |
| 100 | 19.6 |
| 125 | 22.5 |
| 160 | 31.4 |
| 200 | 35.4 |
| 250 | 36.9 |
| 315 | 39.1 |
| 400 | 43.1 |
| 500 | 47.7 |
| 630 | 49.4 |
| 800 | 54.1 |
| 1000 | 55.5 |
| 1250 | 57.5 |
| 1600 | 60.6 |
| 2000 | 60.7 |
| 2500 | 51.0 |
| 3150 | 46.6 |
| 4000 | 49.4 |
| 5000 | 53.1 |
| 6300 | |
| 8000 | |
| 10000 | |



| | | | |
|---|---|--------------------------|--------------------------|
| Rating according to BS EN ISO 717-1:1997 | R_w (C;Ctr) = 46 (-3;-9) dB | | |
| Evaluation based on laboratory measurement results obtained by an engineering method: | C_{50-150} = -6 dB | C_{50-500} = -5 dB | $C_{100-500}$ = -2 dB |
| | $C_{3,50-3150}$ = -16 dB | $C_{3,50-5000}$ = -16 dB | $C_{3,100-5000}$ = -9 dB |

TESTED AT ONE OF THE UKAS ACCREDITED LABORATORIES BELOW

- B.T.C (H-Ref on Graph)
- B.R.E
- AIRO
- S.R.L

Customer: Metsec plc Hepsec Division

BTC 17517A: Page 8 of 10

